



ART CEMENT BOARD



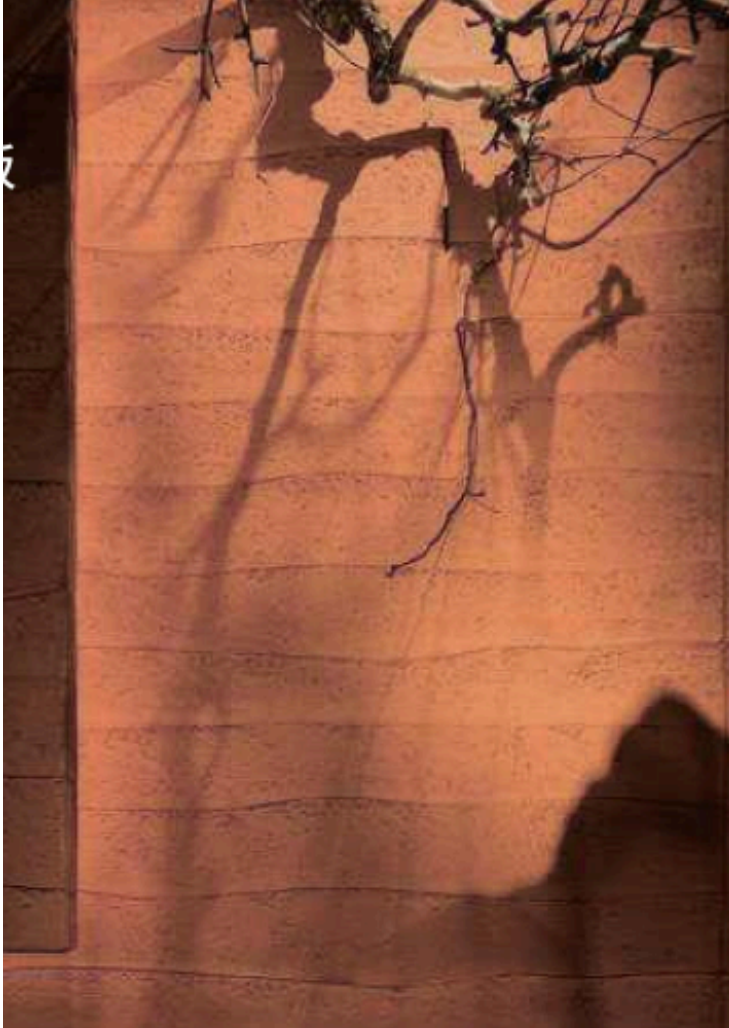
UNIT 3, 28 MAXWELL RD, PARA
HILLS WEST SA 5096



+61 476 351 155



INFO@SPACEWORKSAU.COM
SPACEWORKSAU.COM



ART CEMENT BOARD

Art Cement Boards are fiber-reinforced cement panels designed to replicate stone, wood, and artistic textured finishes while delivering exceptional durability and weather resistance. Manufactured through single-mold casting processes, these panels achieve realistic 3D effects that enhance architectural surfaces in both interior and exterior settings. Their high hardness, waterproof properties, and Class A fire resistance ensure long-term performance even in demanding environmental conditions. Available in multiple styles including rammed earth, wood grain, stone texture, and gilded finishes, Art Cement Boards support diverse design concepts and customizable applications. The panels can be installed using adhesive and mechanical fixing methods, allowing efficient construction and reduced installation costs. Their ability to maintain shape, resist cracking, and withstand weather exposure makes them ideal for storefronts, hospitality projects, residential facades, and feature walls. Art Cement Boards combine aesthetic versatility with structural reliability, offering architects and designers a durable decorative material capable of elevating contemporary architectural designs.

THIN TYPE OF RAMMED EARTH



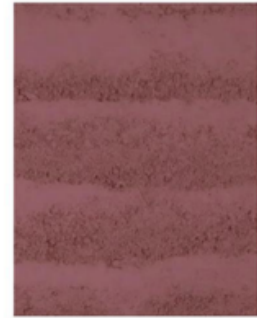
TRAI GRADIENTS
570*2400MM



TRB1 GRADIENTS
570*2400MM



TRC1 TAUPE
570*2400MM



TRD1 RED
570*2400MM



TRE1 BLACK ASH
570*2400MM



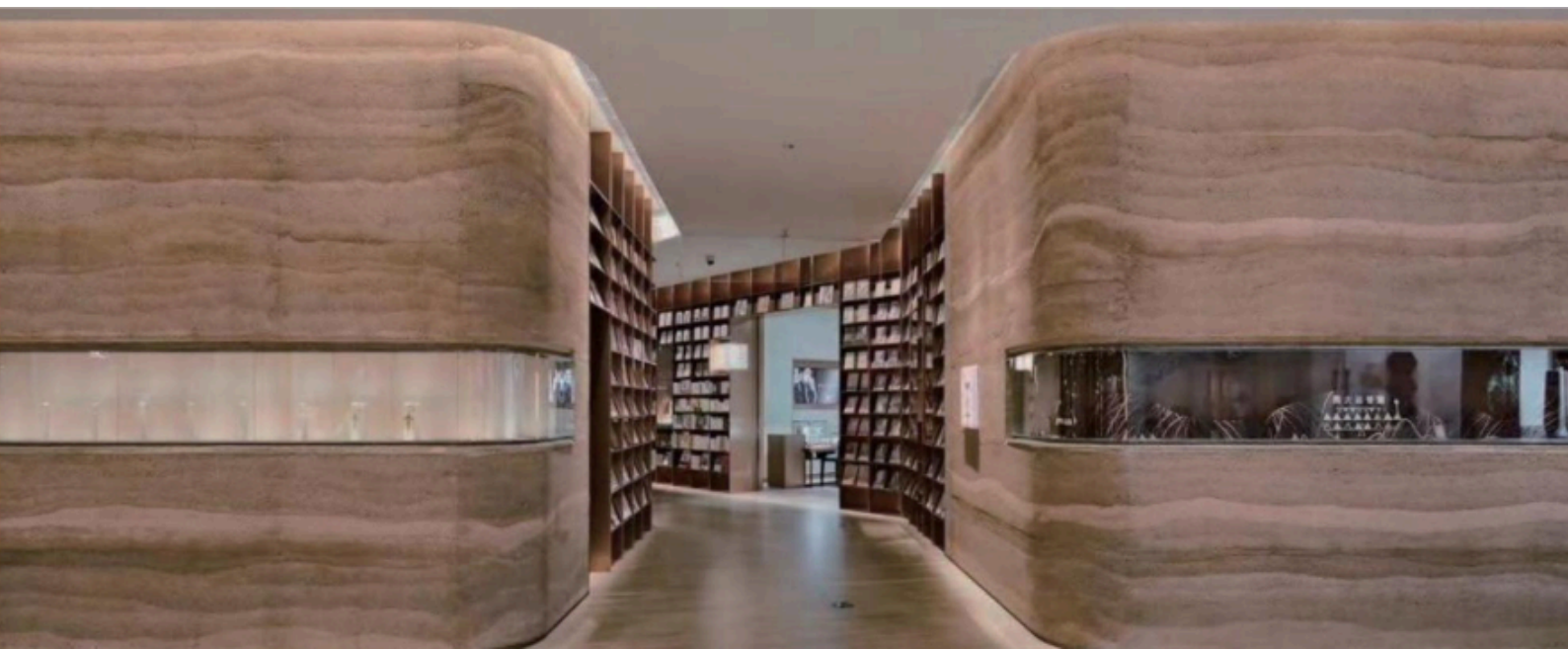
TRA2 GRADIENTS
960*2800MM



TRB2 BLACK ASH
570*2400MM

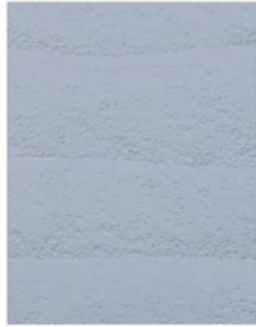


TRII WINE RED
570*2400MM





TRA3 BLACK
580*3100MM



TRB3 WHITE
580*3100MM



TRC3 GREY
580*3100MM



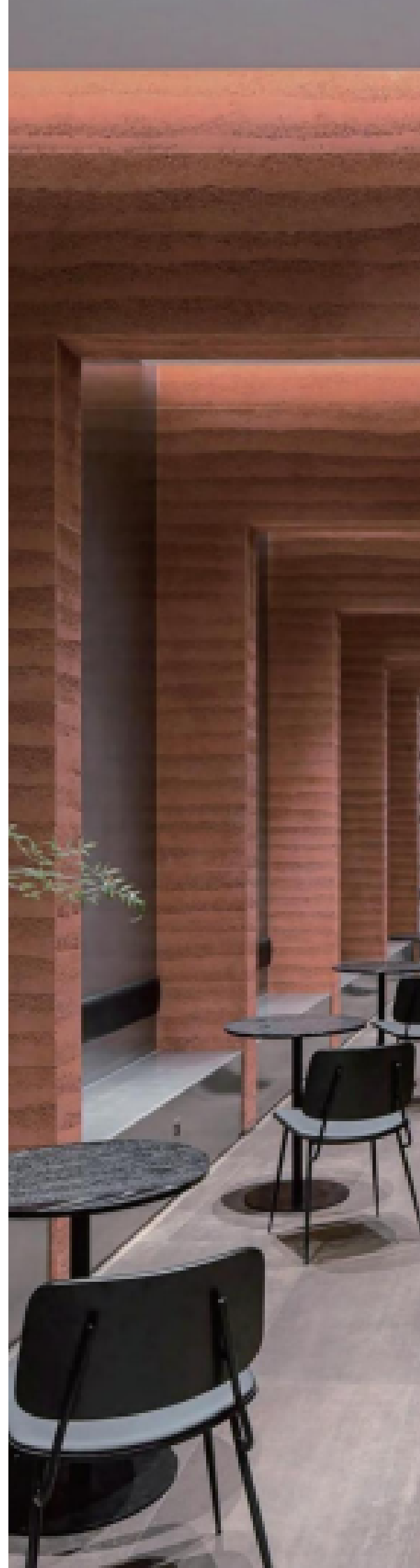
TYG1 BLACK
570*2400MM



TYF1 WHITE
570*2400MM

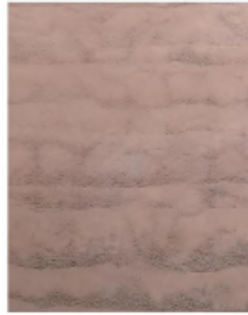


TRH1 GRAY
570*2400MM





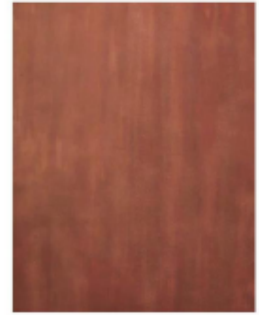
**RAMMED EARTH
AYB7
1220*3000MM**



**RAMMED EARTH AYA7
1220*3000MM**



**RAMMED EARTH OLD
WALL AYA6
1220*3000MM**



**RUST ARA19
1000*3000MM**



**RAMMED EARTH BOARD
DYA12
1120*3000MM**



**WEATHERED CEMENT
BOARD DYA14
1260*3020MM**



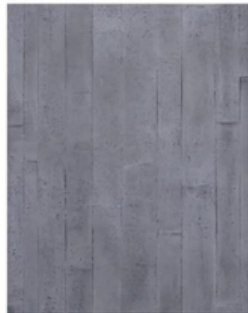
**WOOD GRAIN CEMENT
BOARD DYA13
1220*2960MM**



**CEMENT BOARD DYA15
1220*3100MM**



**CEMENT AYD10
1120*3000MM**



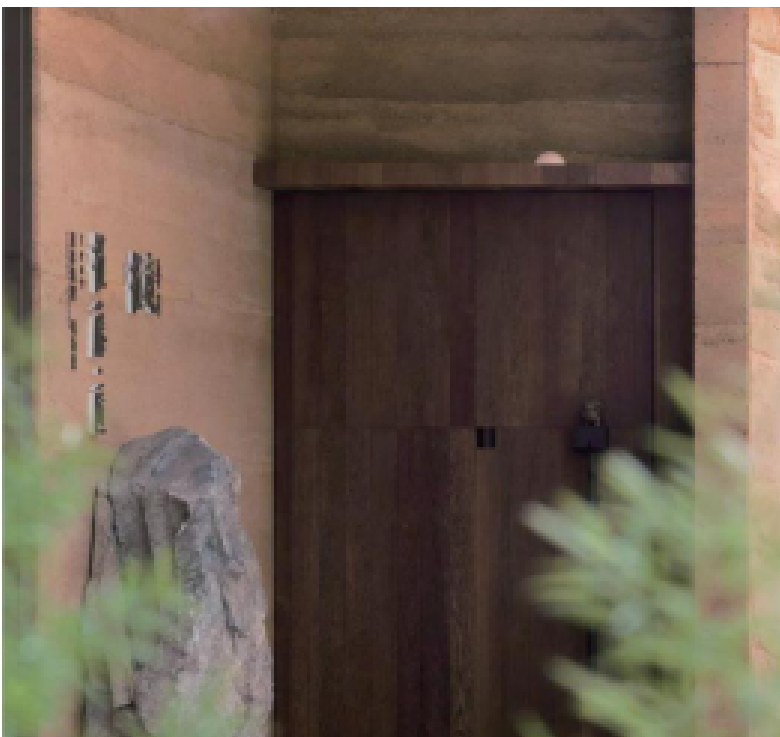
**CEMENT AYA10
1170*3000MM**



**CEMENT AYA12
1170*2950MM**



**CEMENT AYA13
1170*3000MM**

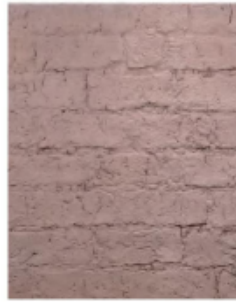




**WHITE CEMENT
SLAB AYC12
1170*3000MM**



**BLACK CEMENT
SLAB AYD1
1170*3000MM**



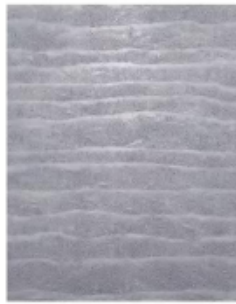
**ADOBE AYA21
1120*3000MM**



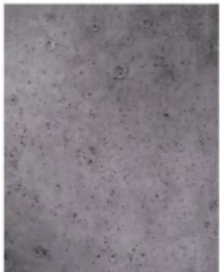
**WHITE RAMMED
EARTH AYN8
1120*3000MM**



**BLACK RAMMED
EARTH AYM8
1120*3000MM**



**GREY RAMMED
EARTH AYP8
1120*3000MM**



**LUNAR SURFACE
CONCRETE SLAB BYA4
1220*3000MM**



**RAMMED EARTH
BYA2
1220*3000MM**



**THIN RAMMED
EARTH TYE3
580*3100MM**



**CEMENT AYA24
1280*3250MM**



**CEMENT AYB23
1220*3000MM**



**RAMMED EARTH
PLATE CYA7
1220*3000MM**







**REVERSE CUT CAVE STONE
BYA16
1190*2880MM**



**FOLLOW THE CUTTING
STONE BYA15
1190*2880MM**



**WEATHERED FLOWING STONE
BYB12
590*2990MM**



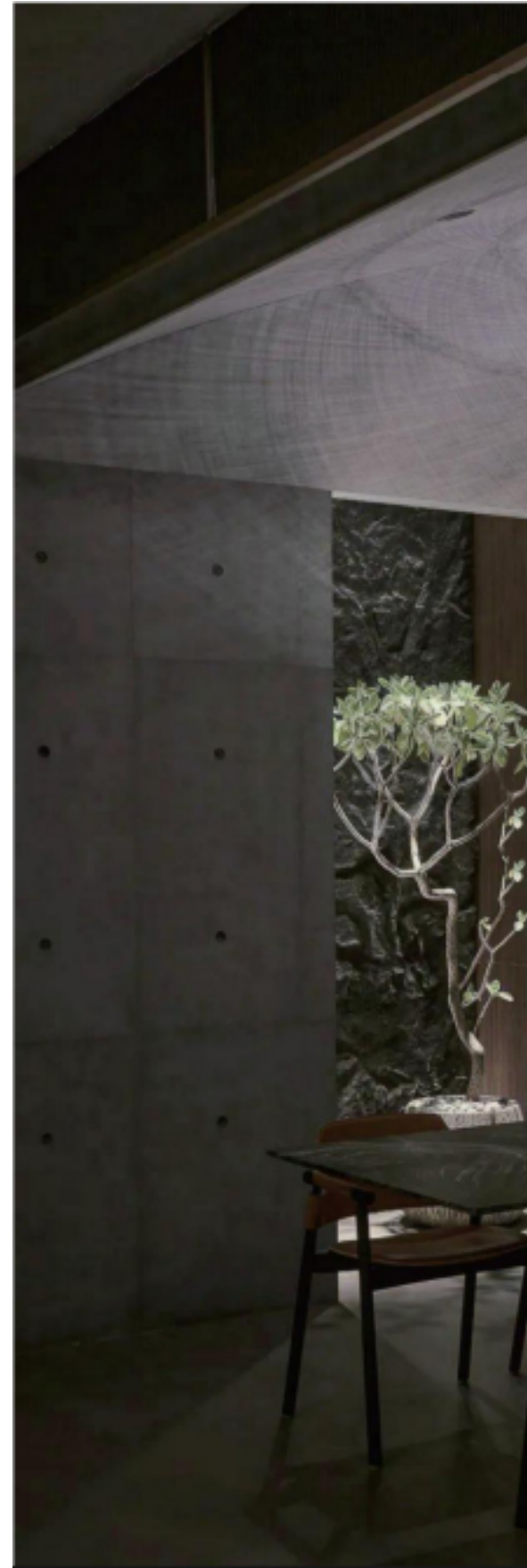
**WEATHERED FLOWING
STONE BYA12
590*2990MM**

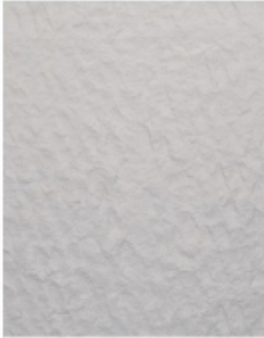


**WASHED STONE AYA25
1200*3250MM**



**WASHED STONE AYB25
1200*3000MM**





MOON STONE CRA2
1200*3260MM



BLACK STELLALITE CRB2
1200*3260MM



THE YELLOW STELLATE CRD2
1200*3260MM



GRAY STELLATE CRC2
1200*3260MM





WASHED STONE AYE25
1220*3000MM



CEMENT LINE BYA5
600*3000MM





RAMMED EARTH AYAB
1220*3000MM



RAMMED EARTH AYAB
1220*3000MM



RAMMED EARTH AYC8
1220*3000MM



RAMMED EARTH AYB8
1220*3000MM



BYA18 RAMMED EARTH PLATE
1220*3000MM



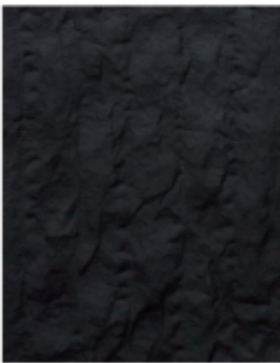
RAMMED EARTH BYJ10
1220*3000MM



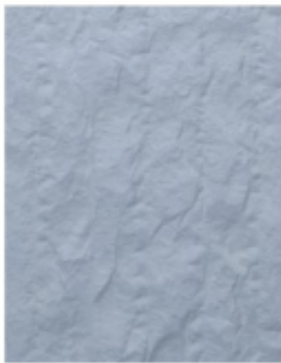
BYE10 RAMMED EARTH PLATE
1220*3000MM



RAMMED EARTH BYA3
1220*3000MM



YUNFENGSHI CYA13
570*2330MM



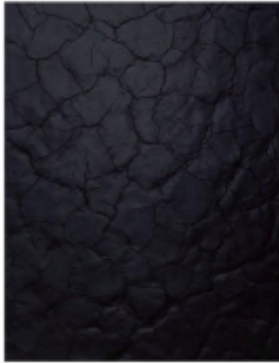
YUNFENGSHI CYB13
570*2330MM



YUNFENGSHI CYC13
570*2330MM



YUNFENGSHI CYD13
570*2330MM



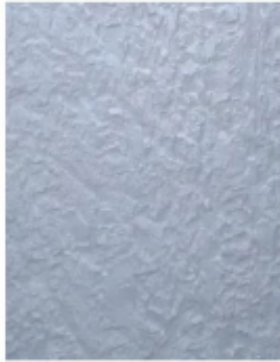
CYA8 CRACK
1200*3300MM



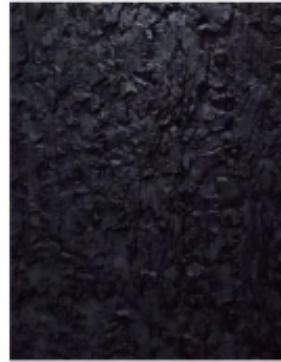
CYB8 CRACK
1200*3300MM



CYC8 CRACK
1200*3300MM



CYB9 SLATE BROWN
1200*3300MM



CYA9 SLATE BROWN
1200*3300MM



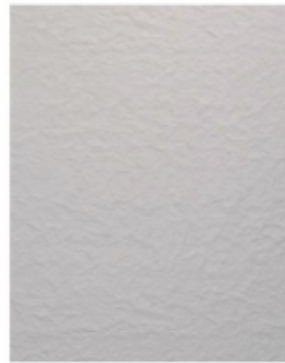
CYC9 SLATE BROWN
1200*3300MM



CYD9 SLATE BROWN
1200*3300MM



CYE9 SLATE BROWN
1200*3300MM



SAND ROCK CRA1
1200*3300MM



**AYC25 WEATHERED
WASHED STONE
1220*3000MM**



**AYD25 WEATHERED
WASHED STONE
1220*3000MM**



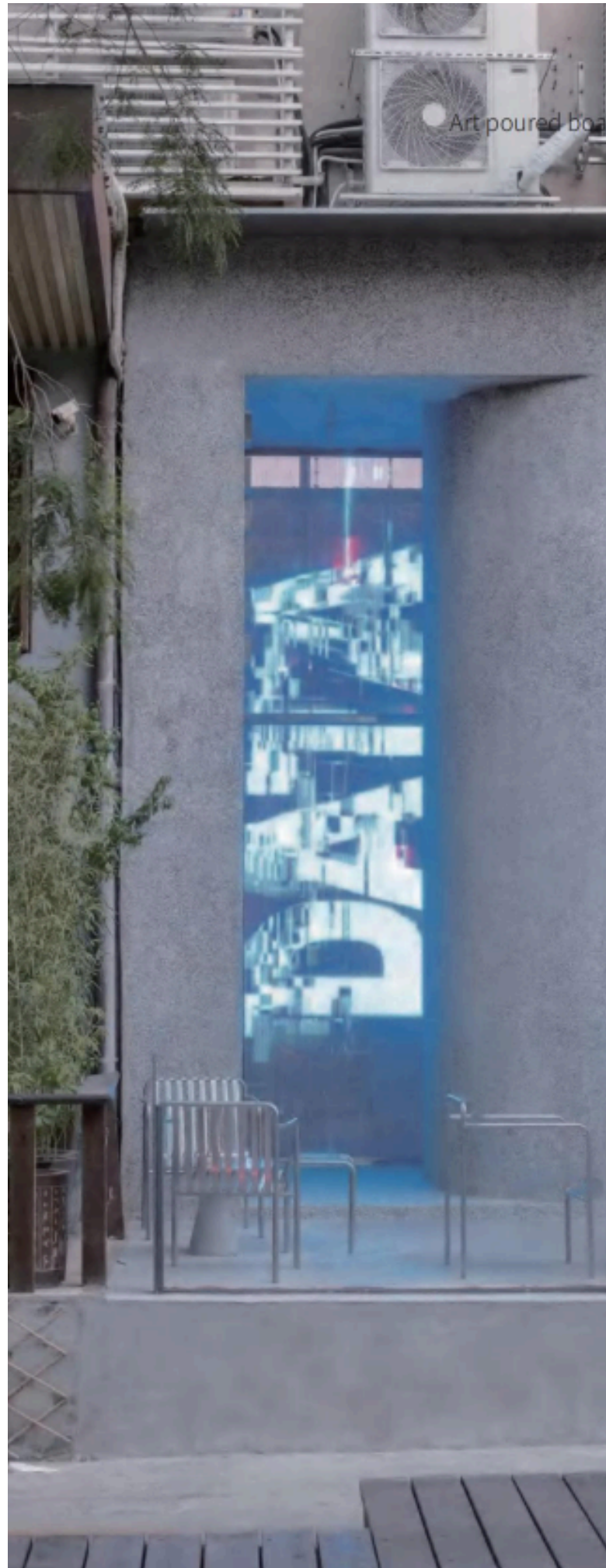
**THE BLACK ROCKS
AYA22
1220*3000MM**



**WHITE ROCK
AYD22
1220*3000MM**



**GREY ROCKS
AYB22
1220*3000MM**





**CYA4 BLACK SAWN
WOOD
1240*3230MM**



**CYE4 WOOD GRAIN
SAW WOOD
1240*3230MM**



**CYB4 WHITE SAWN
WOOD
1240*3230MM**

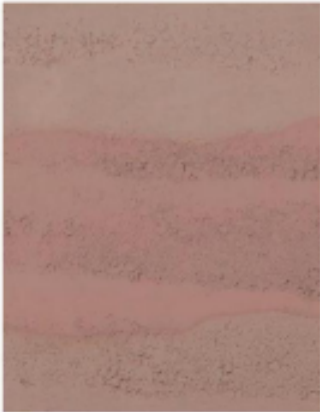


**CYC4 GREY SAWN
WOOD
1240*3230MM**

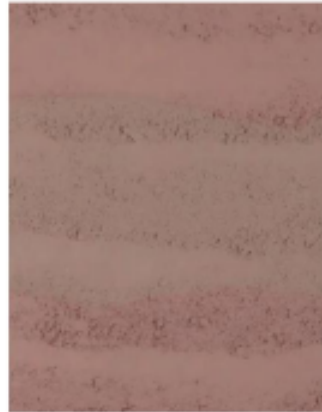


**CYC4 WOOD GRAIN
SAW WOOD
1240*3230MM**

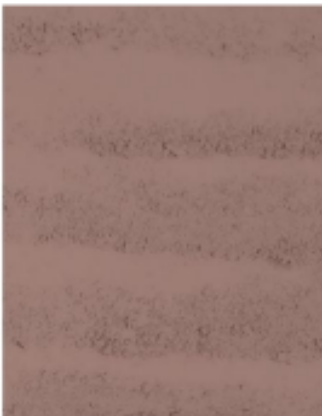




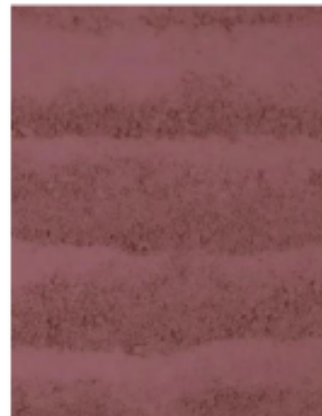
TYA1- GRADIENTS
570*2400MM



TYB1- GRADIENTS
570*2400MM



TYC1 IS YELLOW
570*2400MM



TYD1 RED
570*2400MM





**CAVE STONE
MOSAIC. -DYA1
580*2990MM**



**CAVE STONE
MOSAIC. -DYA2
580*2990MM**



**CAVE STONE
MOSAIC. -DYA3
580*2990MM**



**CAVE STONE
MOSAIC. -DYB1
580*2990MM**

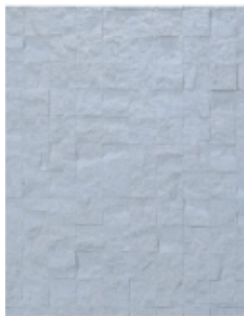


**CAVE STONE
MOSAIC. -DYB2
580*2990MM**



**CAVE STONE
MOSAIC. -DYB3
580*2990MM**

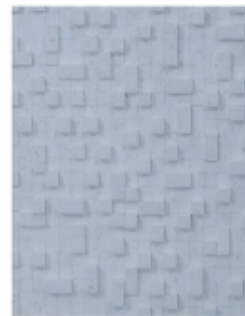




**CAVE STONE
MOSAIC. -DYB3
580*2990MM**



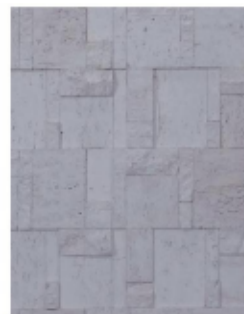
**CAVE STONE
MOSAIC. -DYA5
580*2990MM**



**CAVE STONE
MOSAIC. -DYA6
580*2990MM**



**CAVE STONE
MOSAIC. -DYB4
580*2990MM**



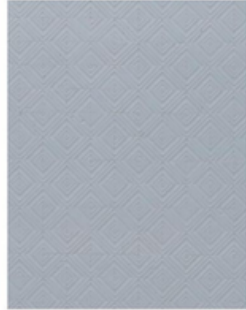
**CAVE STONE
MOSAIC. -DYB5
580*2990MM**



**CAVE STONE
MOSAIC. -DYB6
580*2990MM**



**CAVE STONE
MOSAIC CYA14
580*2980MM**



**CAVE STONE
MOSAIC CYC14
580*2980MM**



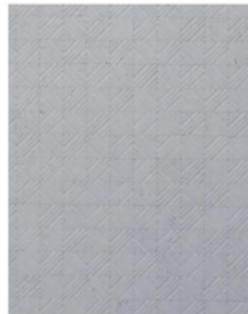
**CAVE STONE
MOSAIC CYA15
580*2980MM**



**CAVE STONE
MOSAIC CYC15
580*2980MM**



**CAVE STONE
MOSAIC CYB14
580*2980MM**



**CAVE STONE
MOSAIC CYD14
580*2980MM**



**CAVE STONE
MOSAIC CYB15
580*2980MM**



**CAVE STONE
MOSAIC CYD15
580*2980MM**





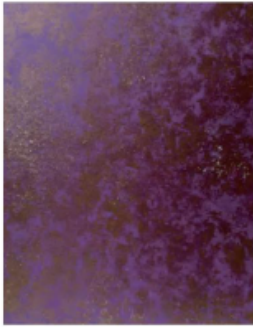
GILT PLATE -DYA7
1220*2440MM



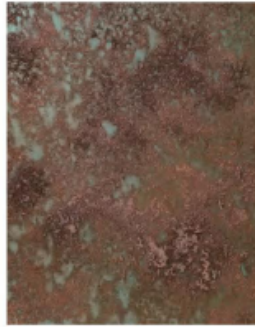
GILT PLATE DYB7
1220*2440MM



GILT PLATE CYF22
1220*2440MM



GILT PLATE -DYD7
1220*2440MM



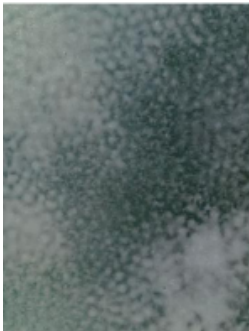
GILT PLATE -DYG7
1220*2440MM



GILT PLATE -DY07
1220*2440MM



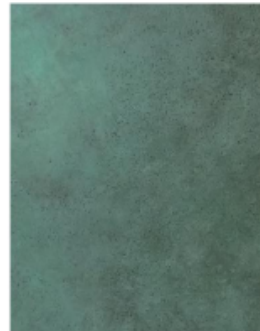
GILT PLATE DYJ7
1220*2440MM



GILT PLATE -DYE7
1220*2440MM



GILT PLATE DYH7
1220*2440MM



GILT PLATE DYK7
1220*2440MM



GILT PLATE DYM7
1220*2440MM



GILT PLATE DYF7
1220*2440MM



GILT PLATE DYL7
1220*2440MM



GILT PLATE DYN7
1220*2440MM



GILT PLATE DYZ7
1220*2440MM



GILT PLATE DYP7
1220*2440MM



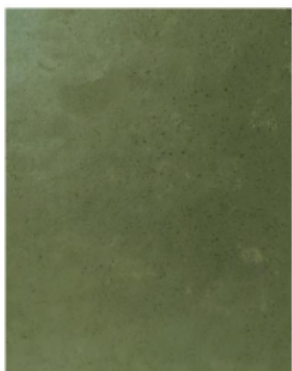
GILT PLATE DYQ7
1220*2440MM



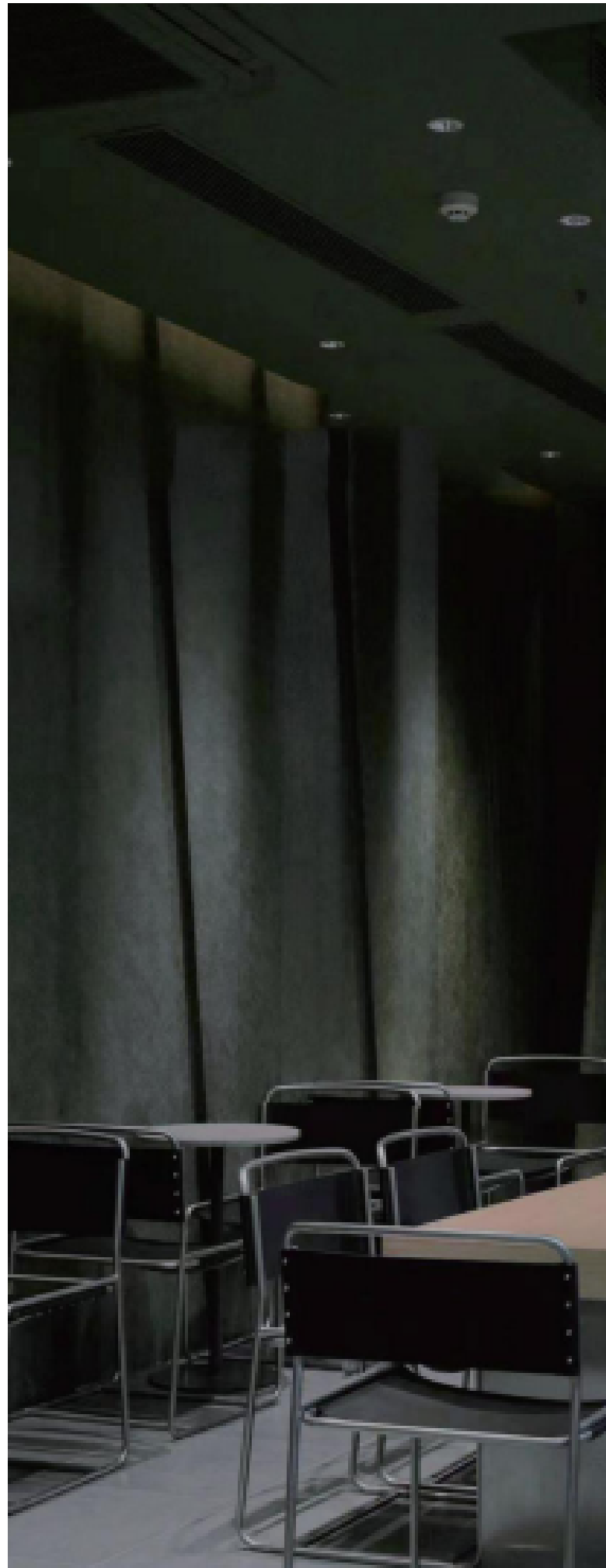
GILT PLATE -DYP7
1220*2440MM



GILT PLATE -DYS7
1220*2440MM



GILT PLATE -DYT7
1220*2440MM





**CLOTH THREAD
STONE WHITE TYB18
600*3000MM**



**CLOTH THREAD
STONE BLACK TYA18
600*3000MM**



**LINEN KNITTED
WHITE TYA9
910*3000MM**



**LINEN KNITTED
RED TYB9
910*3000MM**



**CLOTH THREAD
STONE GRAY TYC18
600*3000MM**



CHORIOIDEA WHITE
TYB20
610*3200MM



CHOROID STONE
BLACK TYA20
610*3200MM



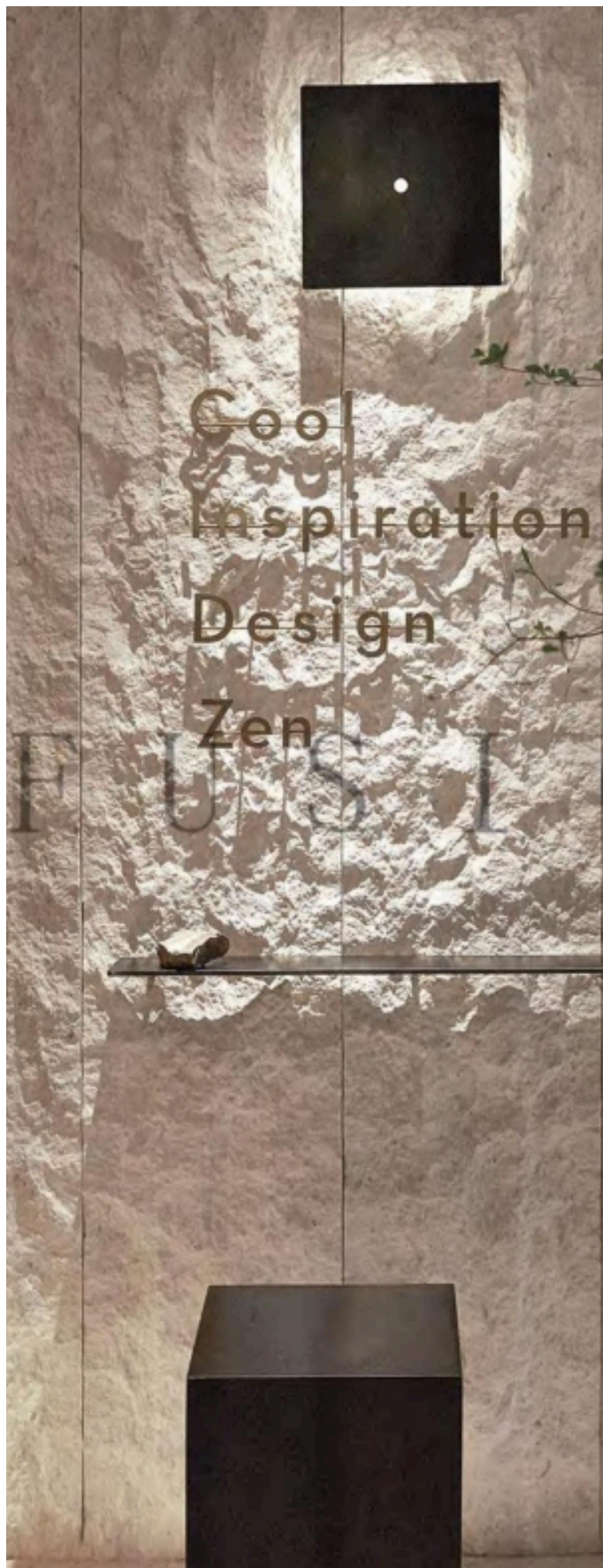
CHORIOIDEA
YELLOW TYD20
610*3200MM



CHORIOIDEA GRAY
TYC20
610*3200MM



CHORIOIDEA OFF
WHITE TYE20
610*3200MM





**CRISSCROSS STONE
WHITE TYB19
610*3200MM**



**CRISSCROSS STONE
BLACK TYA19
610*3200MM**



**CRISSCROSS STONE
YELLOW TYD19
610*3200MM**



**LCRISSCROSS STONE
GREY TYC19
610*3200MM**



**CRISSCUM STONE BEIGE
TYE19
610*3200MM**



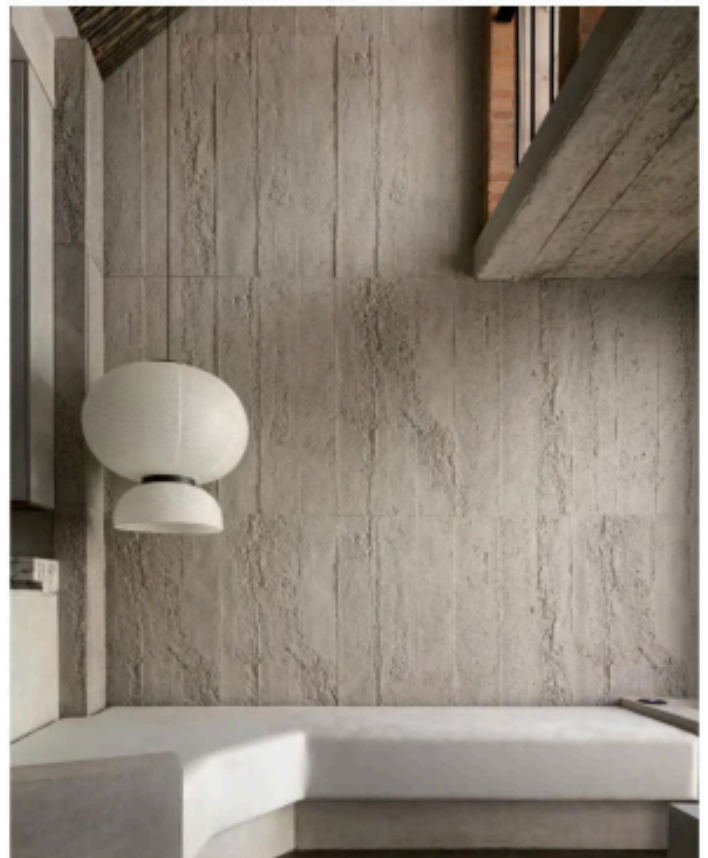
CARBON WOOD TYA12
1220*3180MM

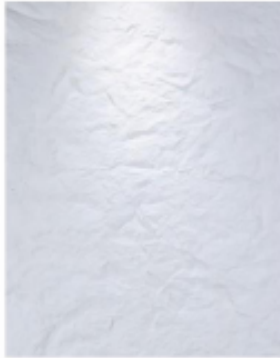


CARBON WOOD TYA13
1260*3200MM

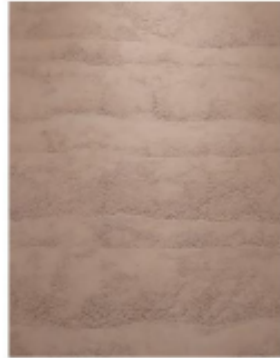


ULTRA-THIN STONE TRA17
600*1200MM

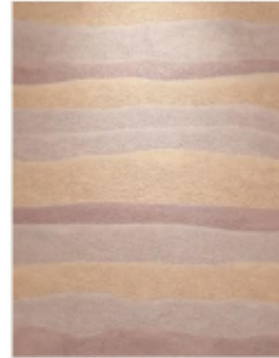




WHITE ROCK TYD22
1220*3000MM



RAMMED EARTH TYA7
1220*3000MM



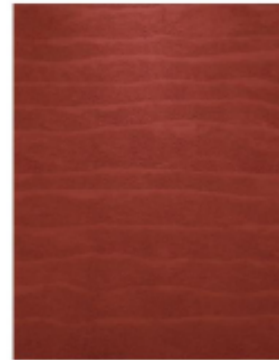
RAMMED EARTH TYA8
1220*3000MM



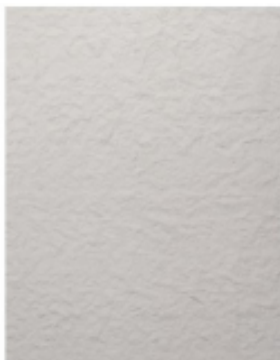
RAMMED EARTH TYB7
1220*3000MM



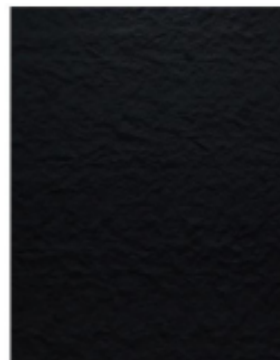
RAMMED EARTH TYC8
1220*3000MM



RAMMED EARTH TYE8
1220*3000MM



SAND ROCK TYA10
1200*3300MM



SAND ROCK TYB10
1200*3300MM



CEMENT BOARD TYA11
530*2390MM



**RAMMED EARTH - BLACK
GRAY TYB2
960*2800MM**



**RAMMED EARTH - BLACK
TYG1
570*2400MM**



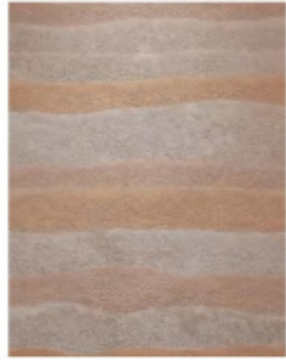
**RAMMED EARTH - RED
TYD1
1220*3000MM**



**RAMMED EARTH - GRAY
TYH1
570*2400MM**



**RAMMED EARTH -
GRADIENT TYA1
570*2400MM**



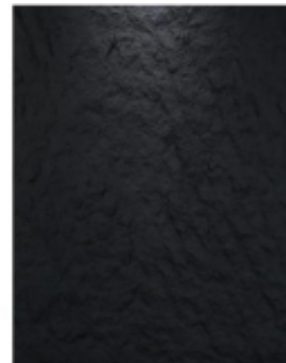
**RAMMED EARTH -
GRADIENT TYA2
960*2800MM**



**BRICK
TRA21
1220*3000MM**



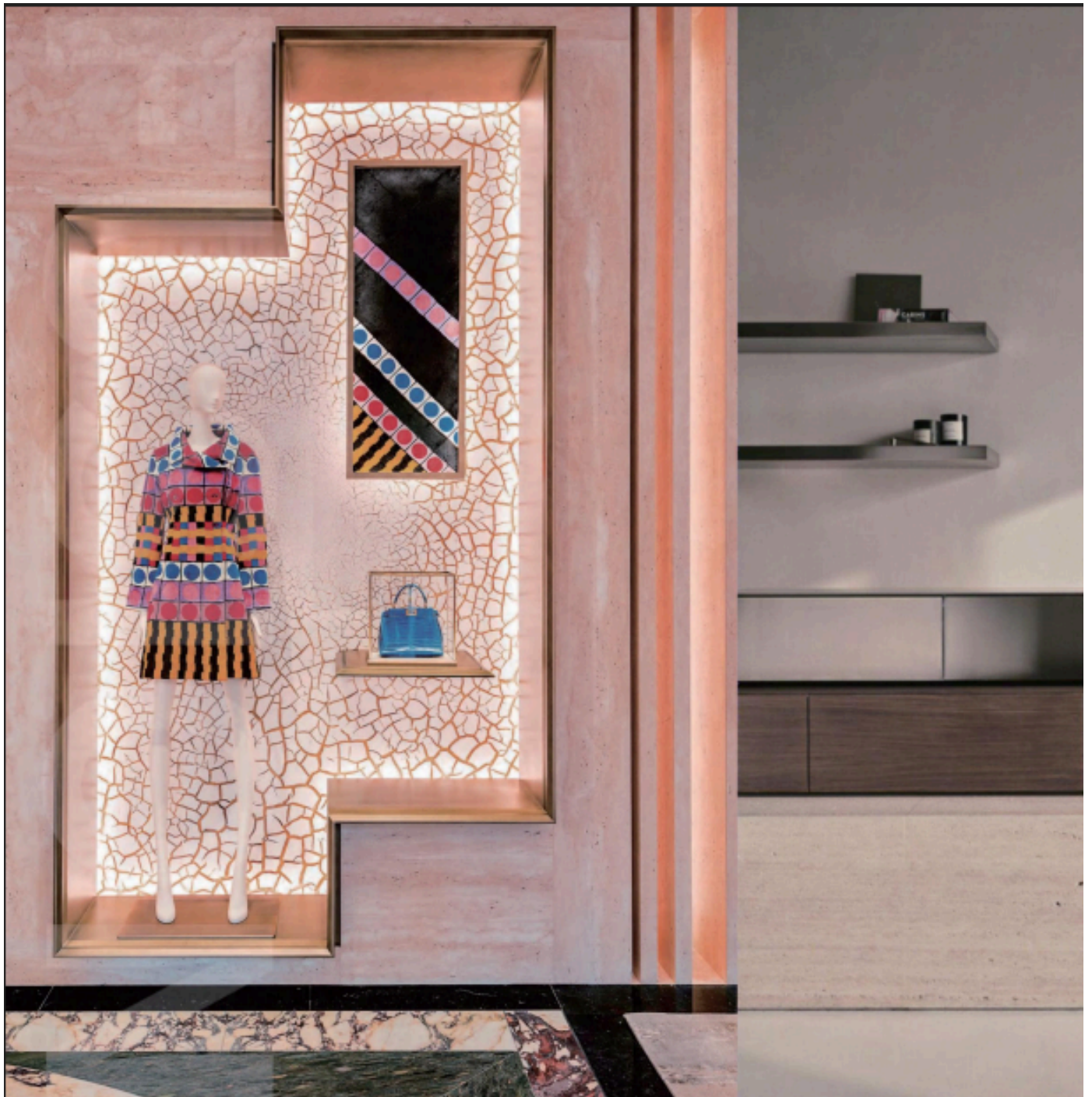
**STARRY MOON
STONE CYA2
1200*3260MM**

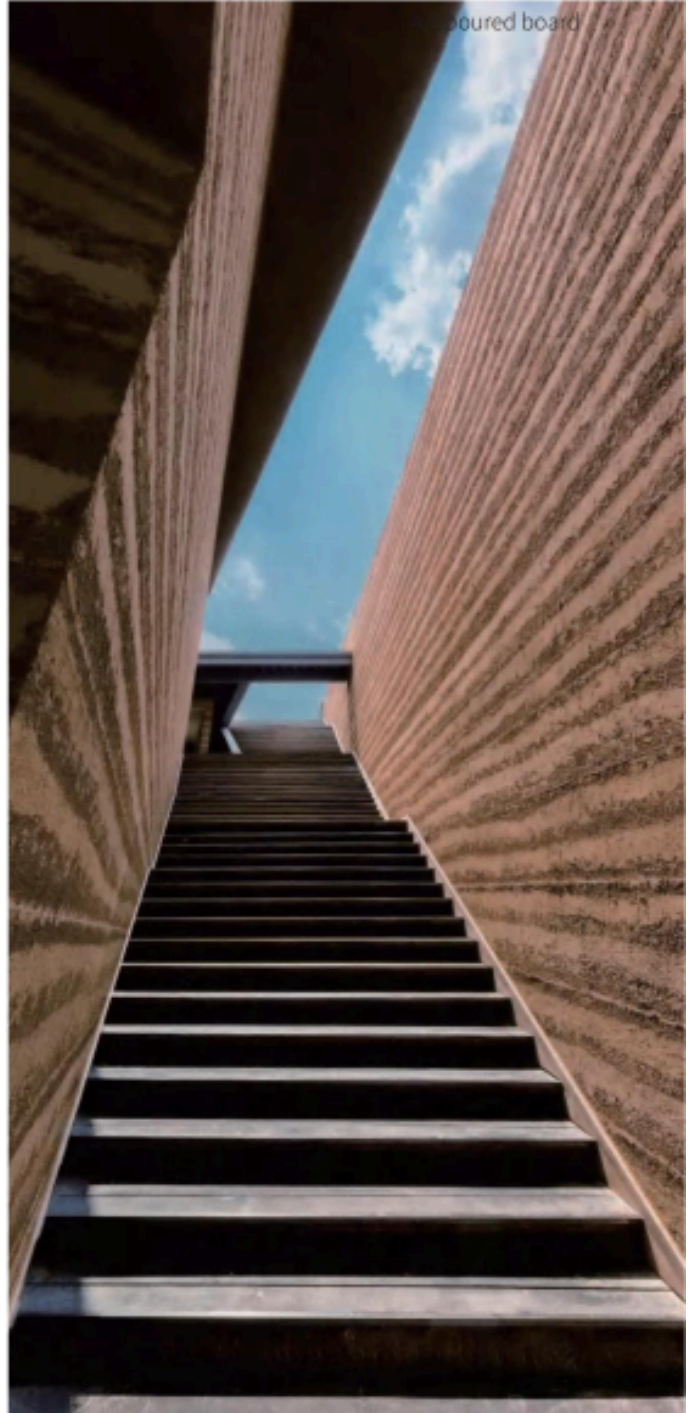


**STAR MOON STONE
CYB2
1200*3260MM**



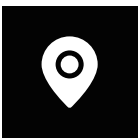








SPACE
WORKSAU



**UNIT 3, 28 MAXWELL RD, PARA
HILLS WEST SA 5096**



+61 476 351 155



**INFO@SPACEWORKSAU.COM
SPACEWORKSAU.COM**