



# STONE MOSAIC



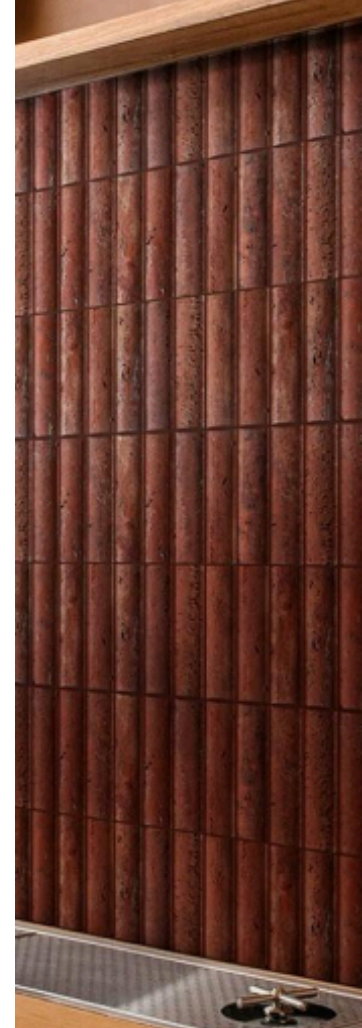
UNIT 3, 28 MAXWELL RD, PARA  
HILLS WEST SA 5096



+61 476 351 155

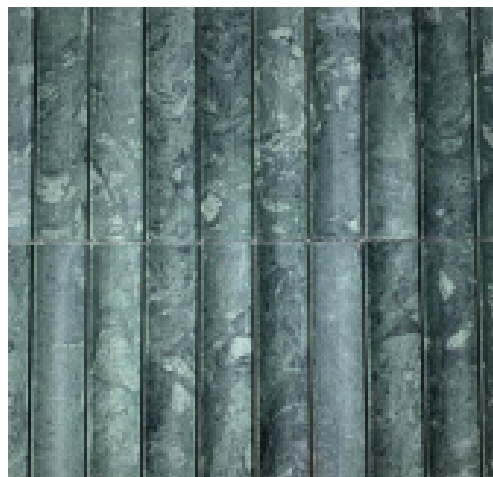


INFO@SPACEWORKSAU.COM  
SPACEWORKSAU.COM

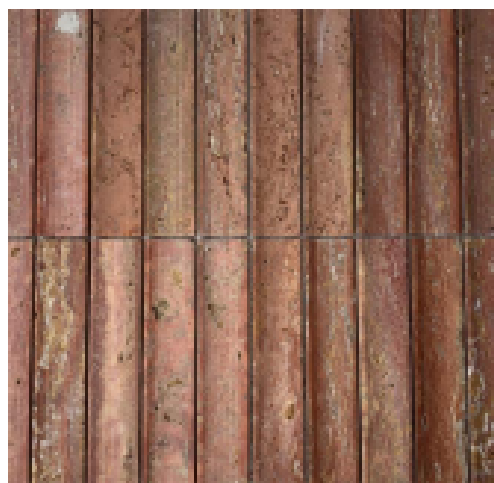


## **STONE MOSAIC**

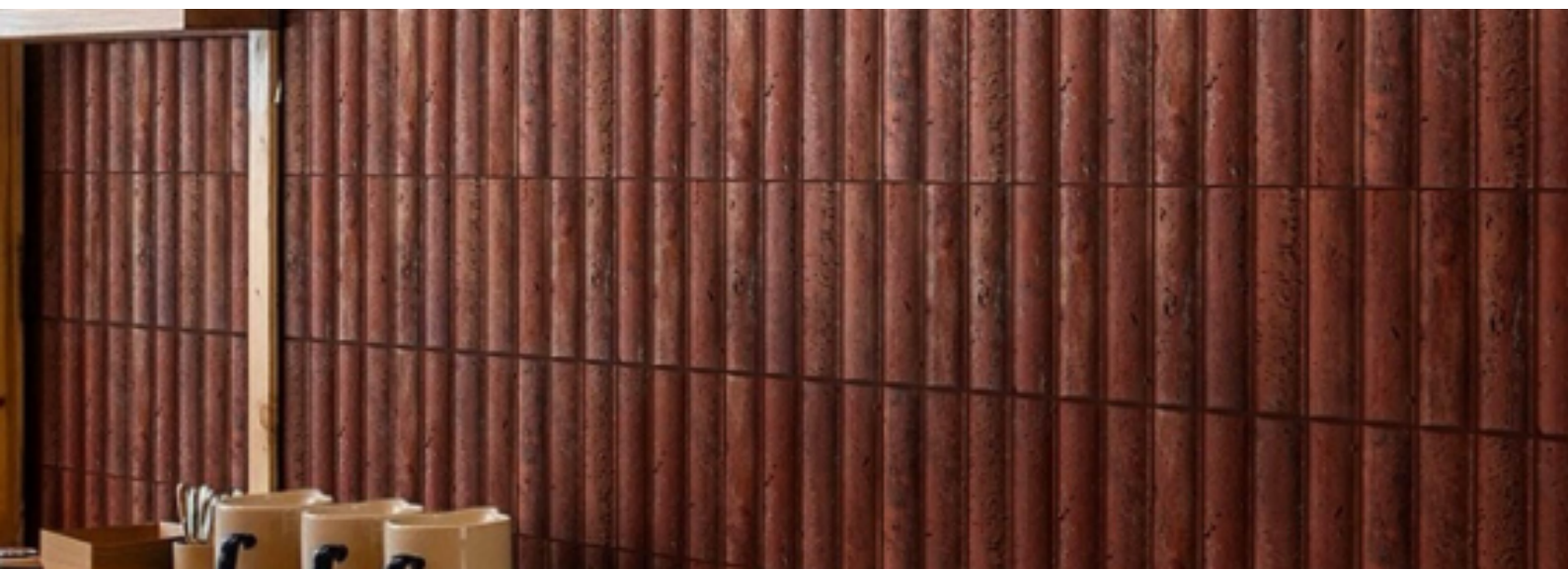
Stone Mosaic panels combine the natural elegance of marble, granite, and travertine with a mesh-backed modular system that simplifies installation while preserving authentic stone aesthetics. Each mosaic piece displays unique textures and color variations, creating visually rich surfaces that enhance both traditional and contemporary design schemes. Known for high hardness and excellent wear resistance, Stone Mosaic panels are suitable for interior and exterior applications including bathrooms, swimming pools, commercial storefronts, and feature walls. Their waterproof and fire-resistant characteristics ensure reliable performance in wet and high-traffic environments, while the polished stone surface allows easy cleaning and long-term maintenance efficiency. The modular format supports creative patterns and enables seamless integration across curved or irregular surfaces. Stone Mosaic solutions deliver a premium architectural finish that balances natural beauty with functional durability. Ideal for designers seeking sophisticated surfaces with timeless appeal, these mosaics offer a versatile decorative option for residential, hospitality, and commercial projects.



**BYY020-1  
INDIAN GREEN  
SIZE 298\*318MM**

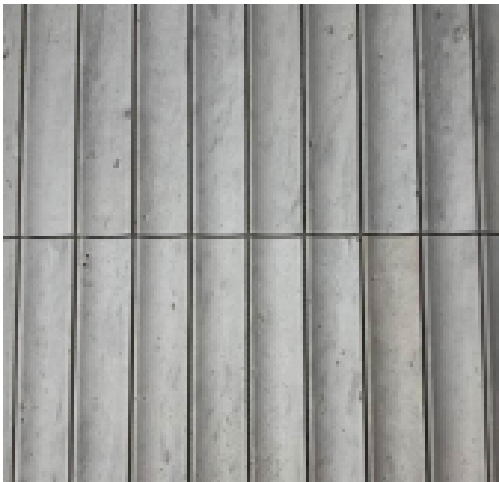


**BYY020-2  
IRAN RED CAVE  
SIZE 298\*318MM**





**BY020-4**  
**CALACATA GOLD**  
**SIZE 298\*318MM**



**BY020-3**  
**WHITE CAVE STONE**  
**SIZE 298\*318MM**



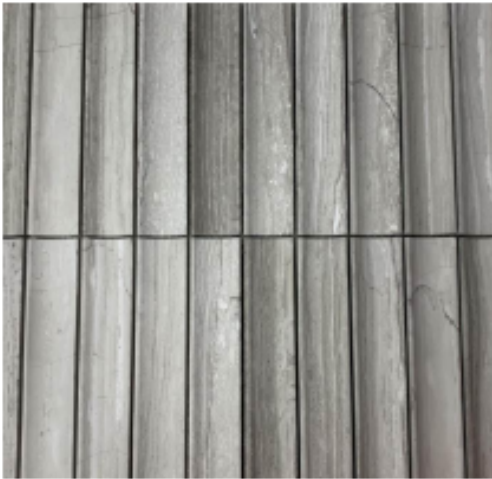


**BY020-5**  
**EURASIAN WOOD GRAIN**  
**SIZE 298\*318MM**



**BY020-6**  
**ATHENS GREY**  
**SIZE 298\*318MM**





**BYY020-7**  
**WHITE WOOD GRAIN**  
**SIZE 298\*318MM**



**BYY020-8**  
**XIMI**  
**SIZE 298\*318MM**



**BYY020-9**  
**SANANA**  
**SIZE 298\*318MM**





**BYY020-10**  
**FINE FLOWER WHITE**  
**SIZE 298\*318MM**

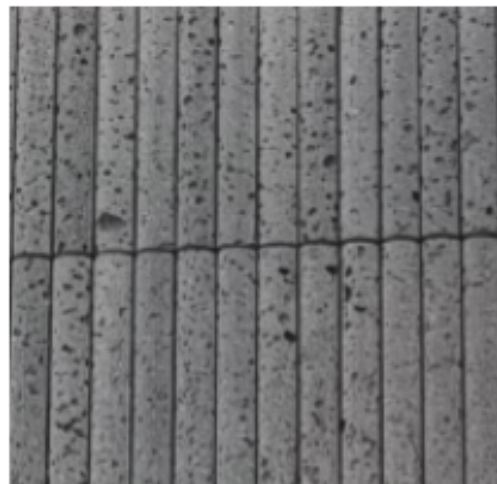


**BYY020-11**  
**WESTERN REGIONS WHITE**  
**SIZE 298\*318MM**

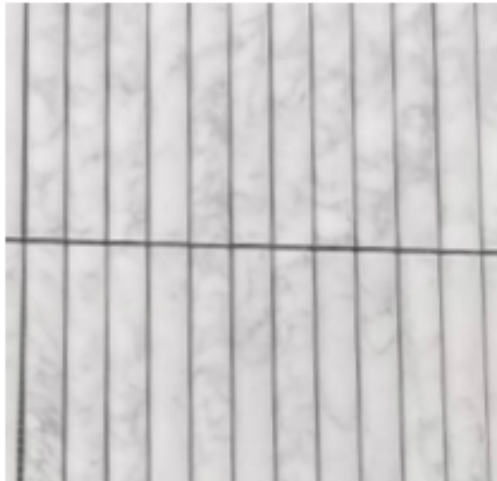




**BYY020-12**  
**TRAVERTINE CREAM**  
**SIZE 298\*318MM**  
**300\*305MM**



**BYY020-13**  
**VOLCANIC ROCK**  
**SIZE 300\*305MM**



**BY020-14  
YANGSHAN WHITE  
SIZE 300\*305MM**



**BY020-15  
SILVER ASH CAVE  
STONE PILLAR BRICK  
SIZE 305\*305MM**



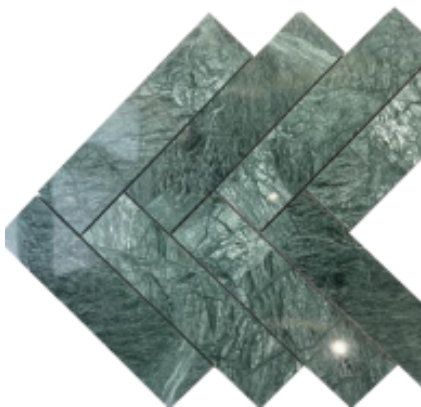
**BY020-16  
CARRARA WHITE  
PILLAR BRICK  
SIZE 305\*305MM**



**BY020-17  
RICE YELLOW CAVE  
STONE PILLAR BRICK  
SIZE 305\*305MM**



**BY020-18 BEIGE CAVE  
STONE  
HIGH AND LOW MOSAIC  
SIZE 300\*300MM**



**BY020-19  
LARGE FISHBONE INDIAN  
GREEN MARBLE MOSAIC  
SIZE 280\*280MM**



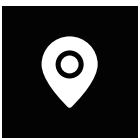
**BY020-20  
LARGE FISHBONE CARRARA  
WHITE MARBLE MOSAIC  
SIZE 305\*305MM**



**BY020-21  
LARGE FISHBONE RICE YELLOW CAVE  
MARBLE MOSAIC  
SIZE 305\*305MM**



**SPACE**  
WORKSAU



**UNIT 3, 28 MAXWELL RD, PARA  
HILLS WEST SA 5096**



**+61 476 351 155**



**INFO@SPACEWORKSAU.COM  
SPACEWORKSAU.COM**