



SPACE  
WORKSAU

# ULTRA THIN STONE



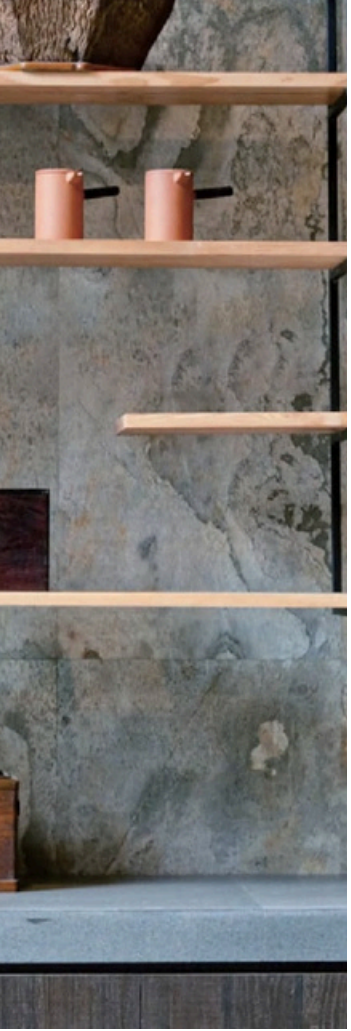
UNIT 3, 28 MAXWELL RD, PARA  
HILLS WEST SA 5096



+61 476 351 155



INFO@SPACEWORKSAU.COM  
SPACEWORKSAU.COM



## ULTRA THIN STONE

Ultra Thin Stone panels offer the authentic beauty of natural stone in a lightweight and flexible format achieved through advanced layering and fiberglass reinforcement technology. With a thickness of approximately 2mm, these panels retain genuine stone textures and patterns while significantly reducing weight, enabling installation across walls, ceilings, furniture, and curved surfaces. The material's flexibility and translucency open new creative possibilities, allowing backlit feature designs that enhance spatial ambiance. Ultra Thin Stone is fire-resistant, moisture-resistant, and highly durable, ensuring reliable performance in both residential and commercial environments. Its simplified installation process reduces labor costs and project timelines while maintaining premium visual impact. Each panel is unique due to natural stone sourcing, delivering exclusive aesthetic outcomes for architectural projects. Ideal for designers seeking luxury finishes without structural limitations, Ultra Thin Stone combines innovation, sustainability, and practicality to provide a sophisticated decorative solution for modern interiors and exteriors.

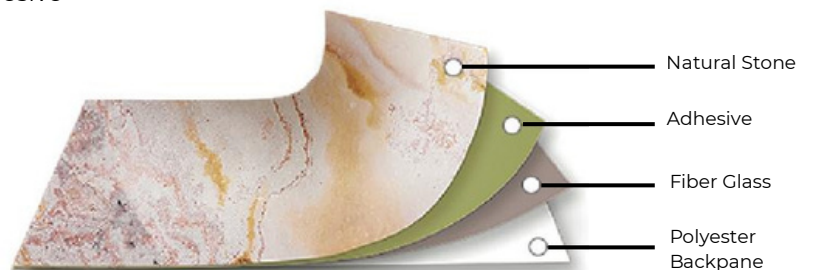


## CORE FEATURES

The natural texture and color of the raw stone cannot be replicated in any piece. Lightweight and convenient for transportation, easy to install, significantly reducing overall costs. Strong and flexible for installation and transportation without damage, meeting the needs of curved surface decoration. Transparent, giving the stone temperature and giving it a texture of brightness.

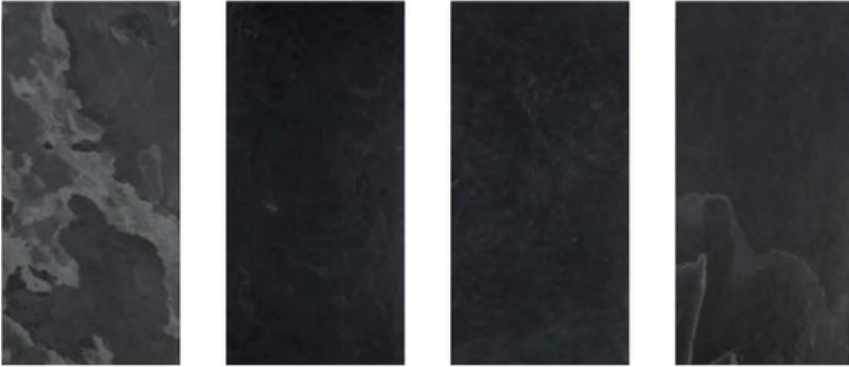
## PARAMETERS

- Thickness: 2mm  $\pm$
- Weight: 1.5kg/m<sup>2</sup>  $\pm$
- Fire rating: B1 level
- Temperature resistance: Flat tensile adhesive strength 4.17MPa
- Size shrinkage rate: average: 0.03% maximum: 0.06%
- Adhesive for pasting: specialized structural adhesive



**GLORY BLACK**

Size: 610\*1220/ 920\*2820/ 1200\*2440/ 1220\*3050/ 1600\*3100mm



**FOREST COPPER**

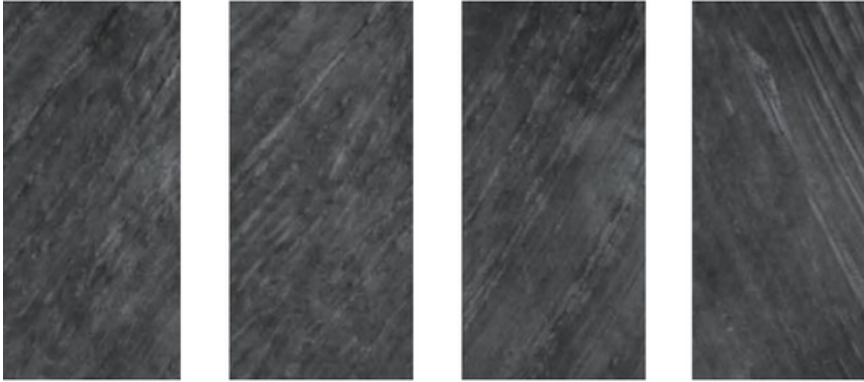
Size: 610\*1220/1220\*2440/920\*2820/1220\*3050mm



**BLACK IN D**

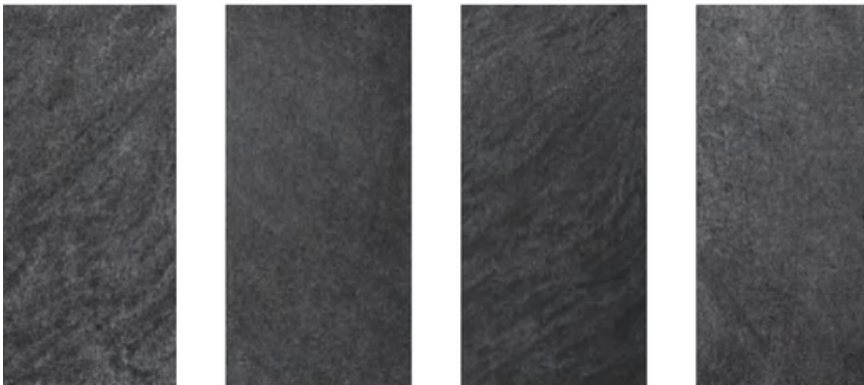
Size:

610\*1220/1220\*2440/920\*2820/1200\*2800/1220\*3050/1700\*3200/1600\*3300mm



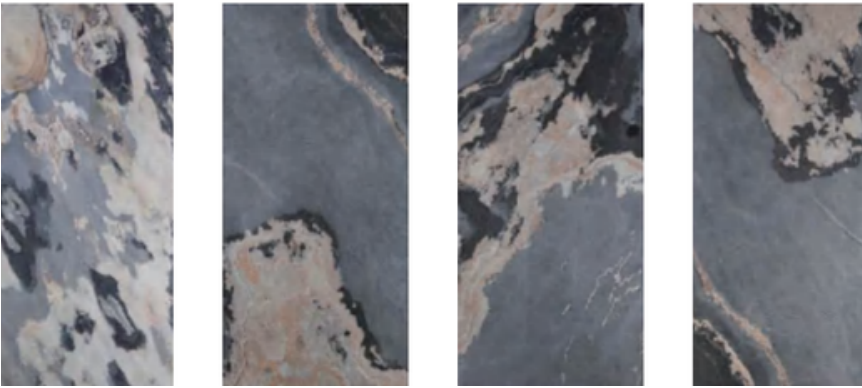
**BLACK SANDS**

Size: 610\*1220/1220\*2440/920\*2820/1220\*3050/1440\*3100mm



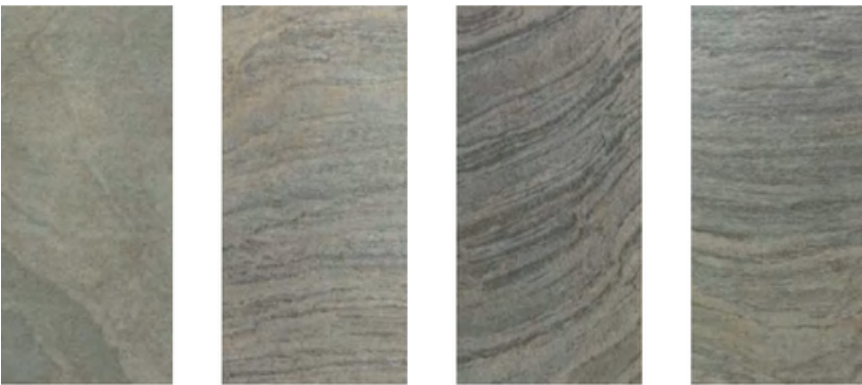
**COUNTRYSIDE AUTUMN**

Size: 610\*1220/1220\*2440/920\*2820/1220\*3050/1098\*3100/2200\*3100mm



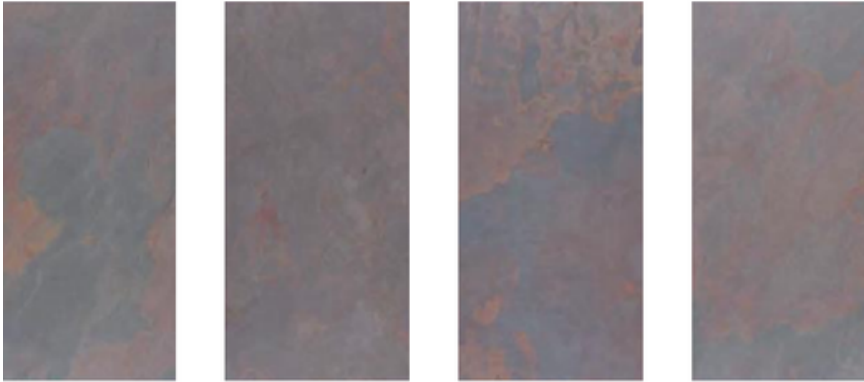
**JARRAH GREEN**

Size: 610\*1220/1220\*2440/1220\*3050mm



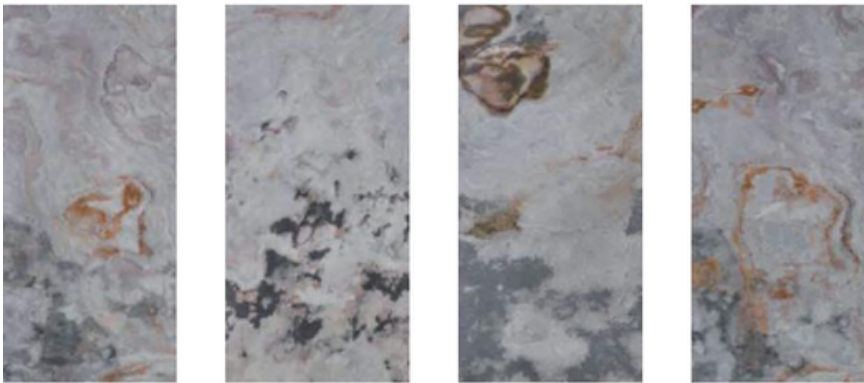
**RUST RED**

Size: 610\*1220/920\*2820/1220\*2440/1220\*3050mm



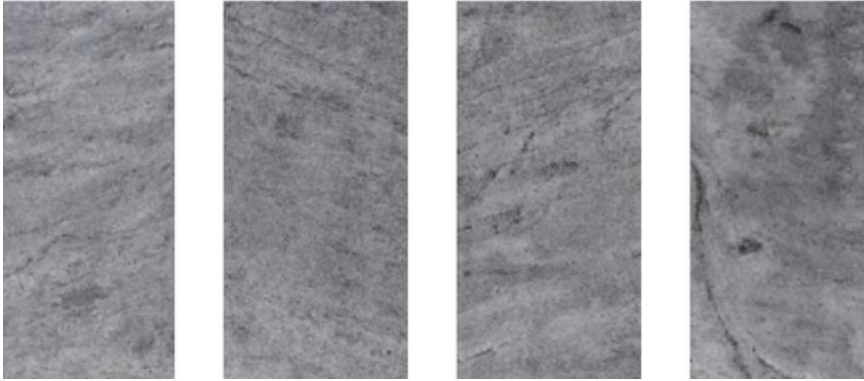
**LATE AUTUMN**

Size: 610\*1220/920\*2820/1220\*2440/1220\*3050/1500\*3000mm



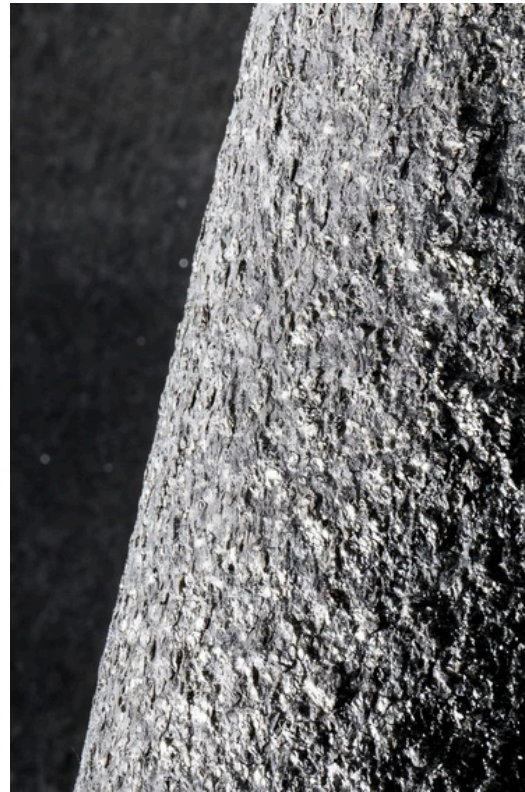
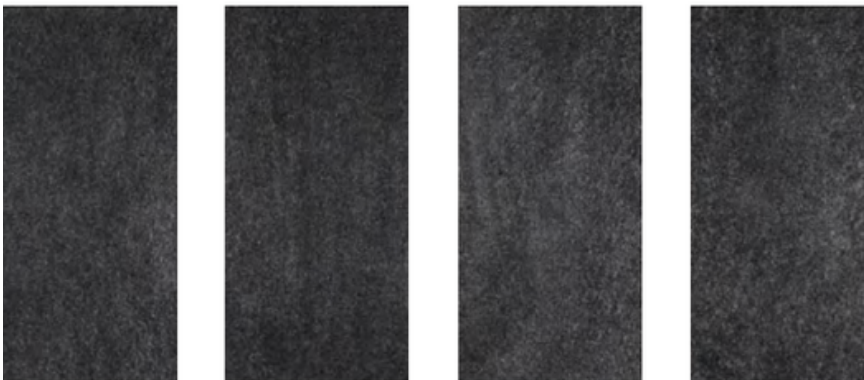
**SILVER GREY**

Size: 610\*1220/920\*2820/1220\*2440/1220\*3050/1600\*3100mm



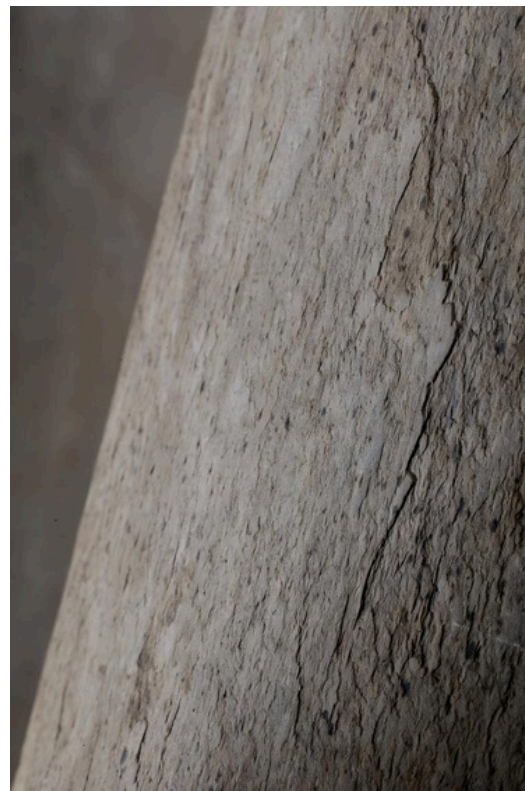
**STAR BLACK**

Size: 610\*1220/920\*2820/1220\*2440/1220\*3050mm



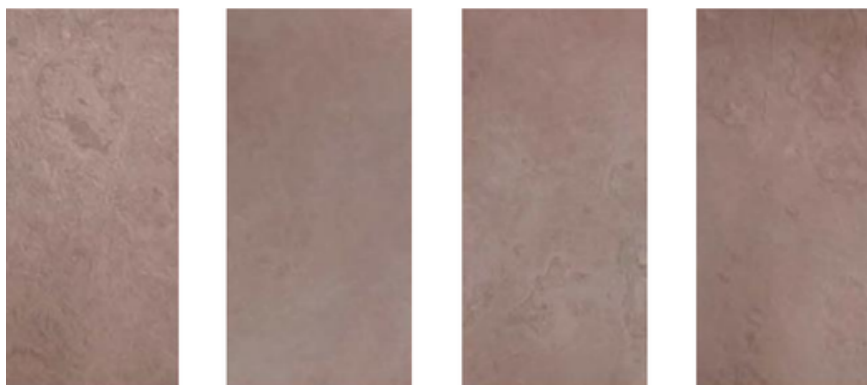
**TAN EARTH YELLOW**

Size: 610\*1220/920\*2820/1220\*2440/1220\*3050/1500\*3100mm



**DANXIA RED**

Size: 610\*1220/920\*2820/1220\*2440/1220\*3050mm



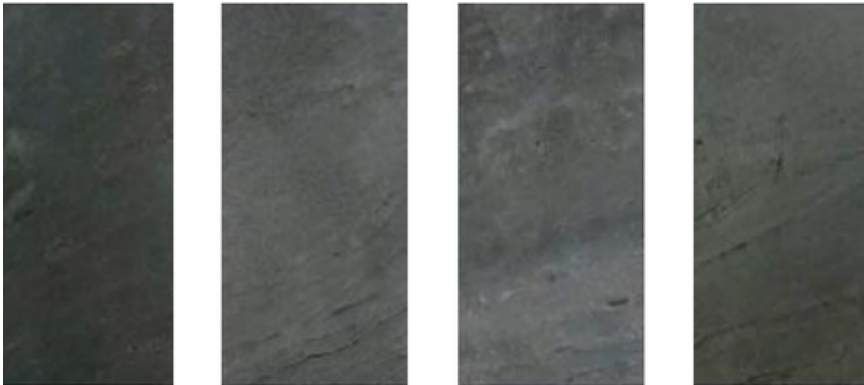
**ICE PEARL**

Size: 520\*1130/1130\*2350/1130\*2930/920\*2820/1800\*3500mm



**EMERALD GREEN**

Size: 610\*1220mm



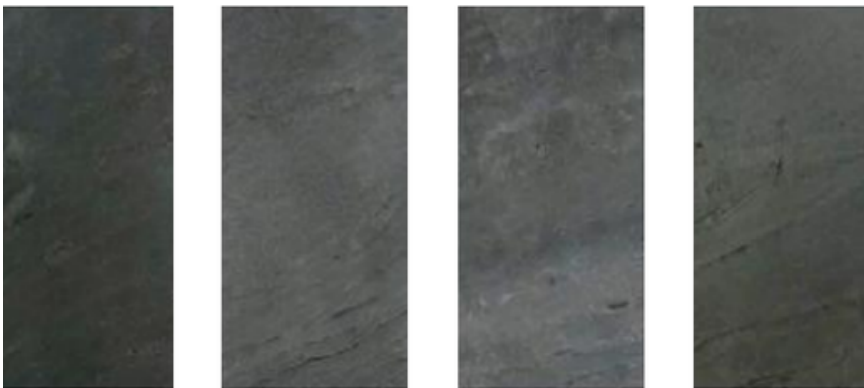
**IRON RUST RED**

Size: 1220\*3050mm



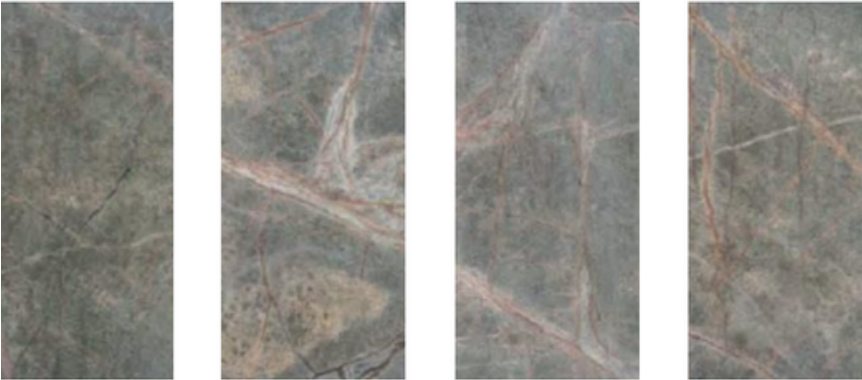
**RAINFOREST BROWN**

Size: 610\*1220/1220\*2440mm



**RAINFOREST GREEN**

Size: 610\*1220/1220\*2440mm



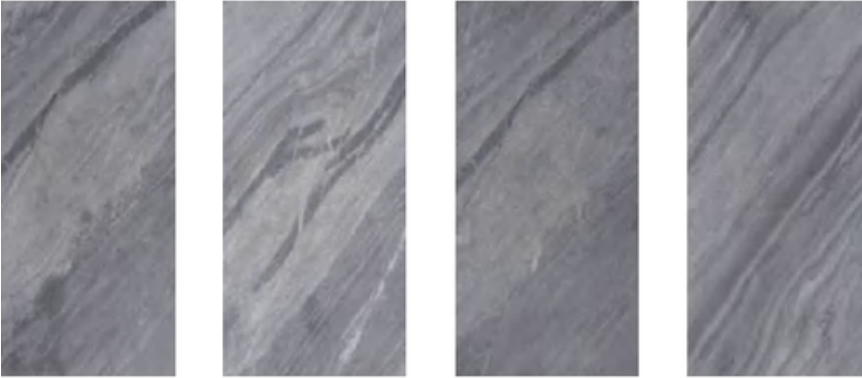
**WHITE SAND BEACH**

Size: 610\*1220/1220\*2440mm



**BLACK STORM**

Size: 610\*1220mm



**MERCURY GREY**

Size: 610\*1220/1220\*2440mm



# TRANSLUCENT SERIES

**COUNTRYSIDE AUTUMN**



**DANXIA RED**

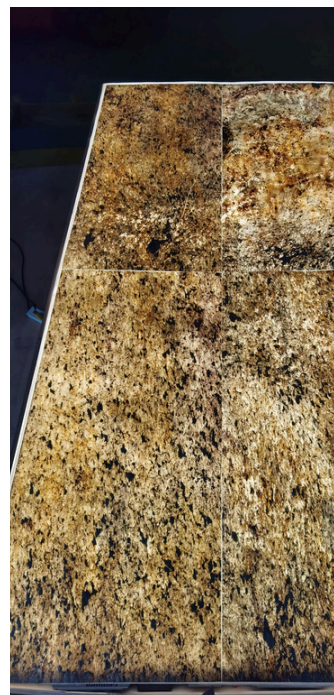


# TRANSLUCENT SERIES

**FOREST COPPER**



**GOLD**

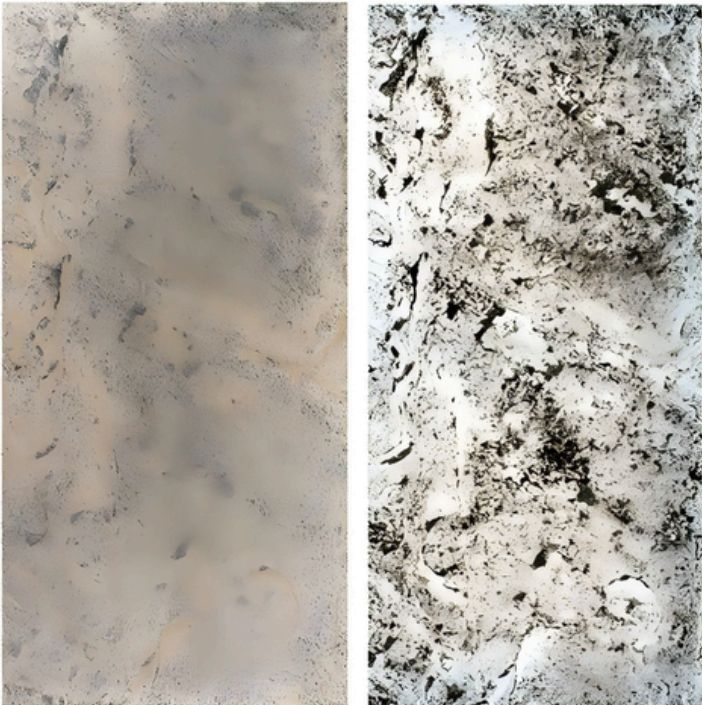


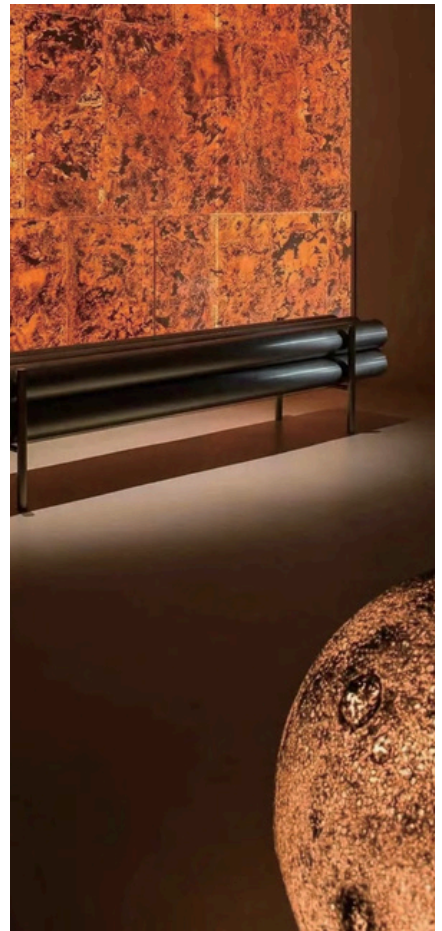
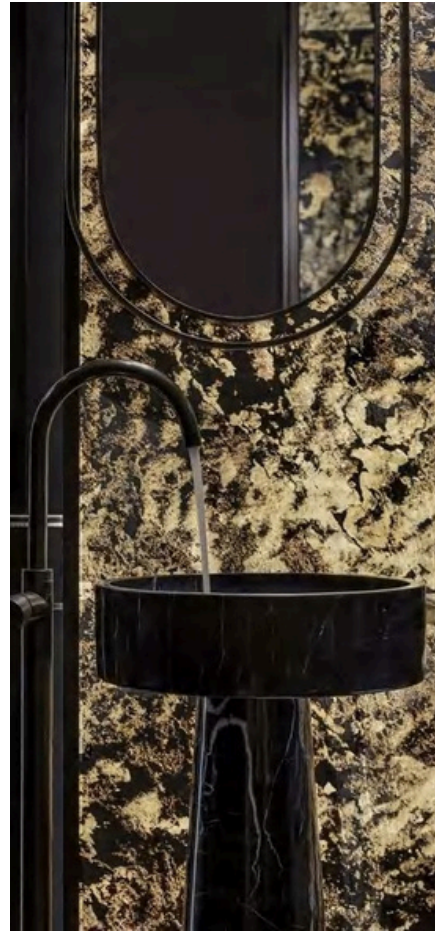
# TRANSLUCENT SERIES

LATE AUTUMN



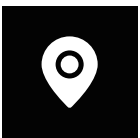
SILVER GREY







**SPACE**  
WORKSAU



**UNIT 3, 28 MAXWELL RD, PARA  
HILLS WEST SA 5096**



**+61 476 351 155**



**INFO@SPACEWORKSAU.COM  
SPACEWORKSAU.COM**